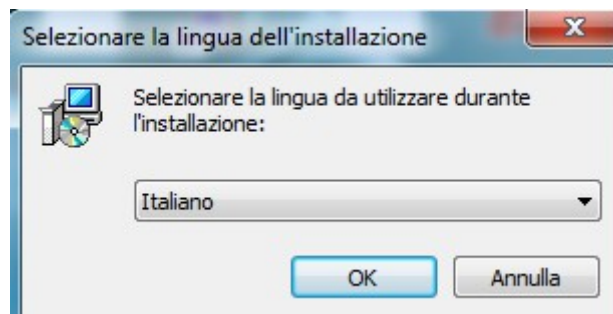




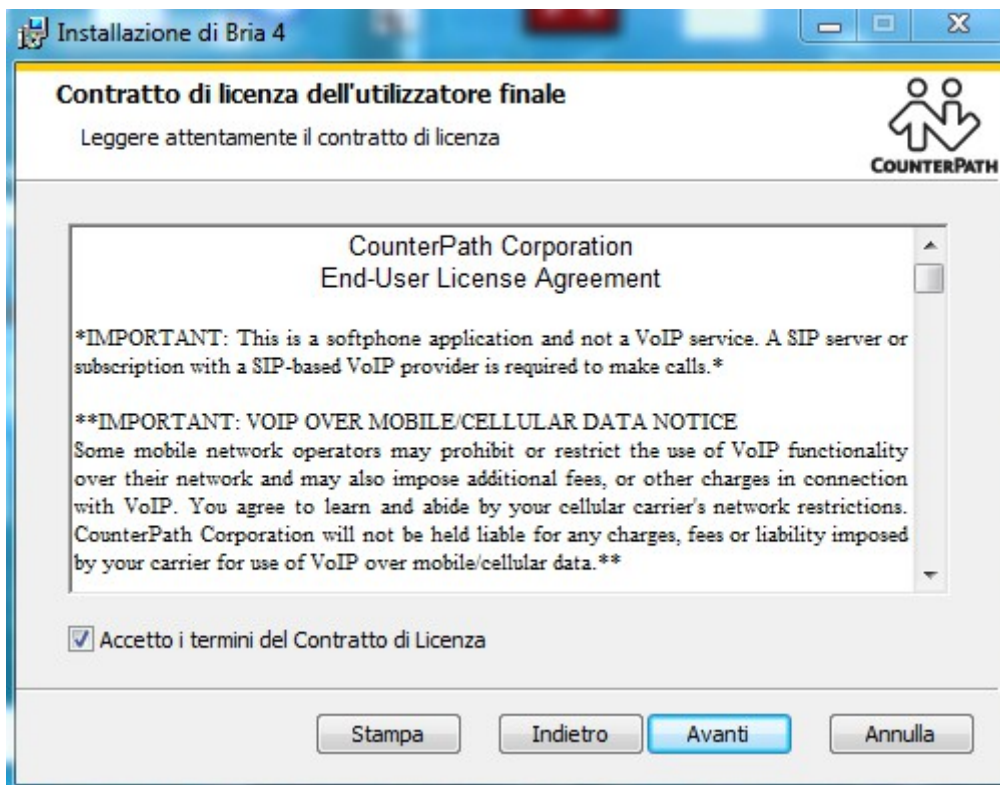
# Installation guide and BRIA configuration for Windows

## INSTALLATION

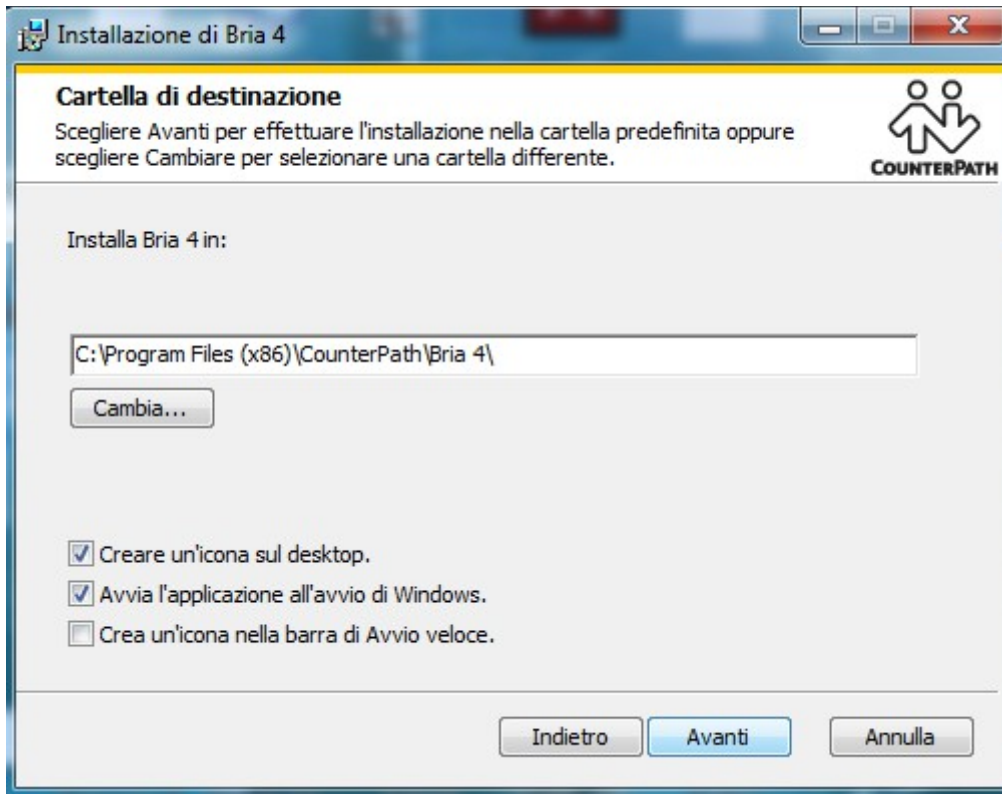
1. Select the installation language of the application and press the OK button. on the next screen, press the Next button



2. Accept the license agreement by ticking the relevant item and press the Next button.

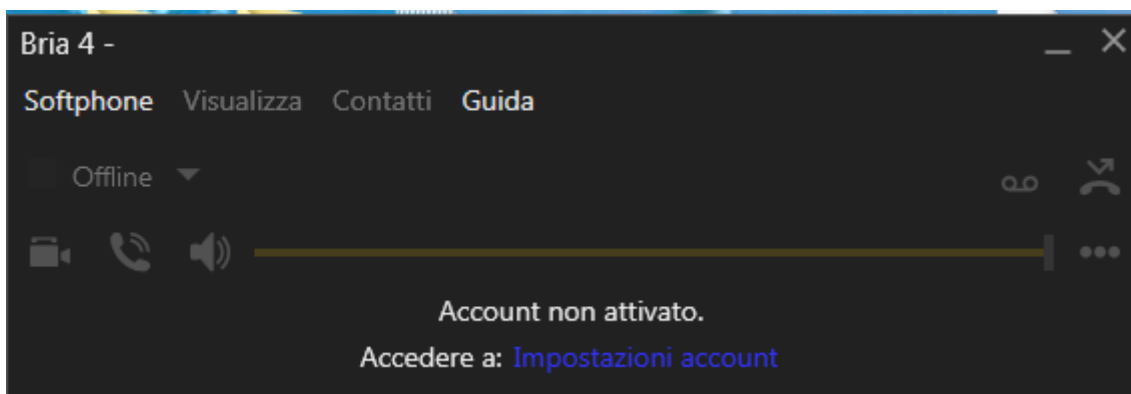


3. Verify that the items Create an icon on the desktop and Start application when Windows starts are checked and click the Next button. Then confirm the installation by pressing the button Install. When installation is completed, press the Finish button, and you will find the icon on the Desktop the application.



## CONFIGURAZIONE

1. Start the application and enter a new Bria VoIP account by clicking on "Account Settings."



2. Under the Account tab fill in the fields as follows:
  - Account name: VoipTel
  - User ID: VoIP account number or phone number of Easy-VoipTel
  - Domain: voip.swissvoiptel.ch or the domain name of the PBX Easy-VoipTel
  - Password: The password or User Account VoIP Easy-VoipTel
  - Display Name: Account number or VoIP phone number of Easy-VoipTel
  - Permission Name: Account number or VoIP phone number of Easy-VoipTel

Account SIP

Account Casella vocale Topologia Presenza Storage Trasporto Avanzate

Nome account: VoipTel

Protocollo: SIP

Autorizza questo account per

Chiama

IM e presenza

Dettagli utente

\* ID utente: 123456

\* Dominio: voip.swissvoiptel.ch

Password: ●●●●●●●●●●●●●●●●

Nome visualizzato: 123456

Nome autorizzazione: 123456

- Under the Voicemail tab enter the value 777 on the item number to activate the control voicemail and confirm the changes by pressing the OK button.

Account SIP

Account Casella vocale Topologia Presenza Storage Trasporto Avanzate

Controlla casella vocale

Numero per attivare il controllo della casella vocale: 777

Numero per l'invio di chiamate alla casella vocale:

Invia chiamate a casella vocale se senza risposta per: 0 secondi

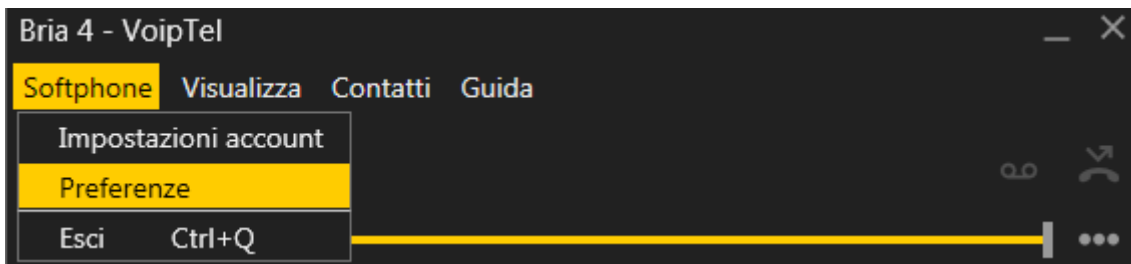
Inoltro in corso

Sempre a:

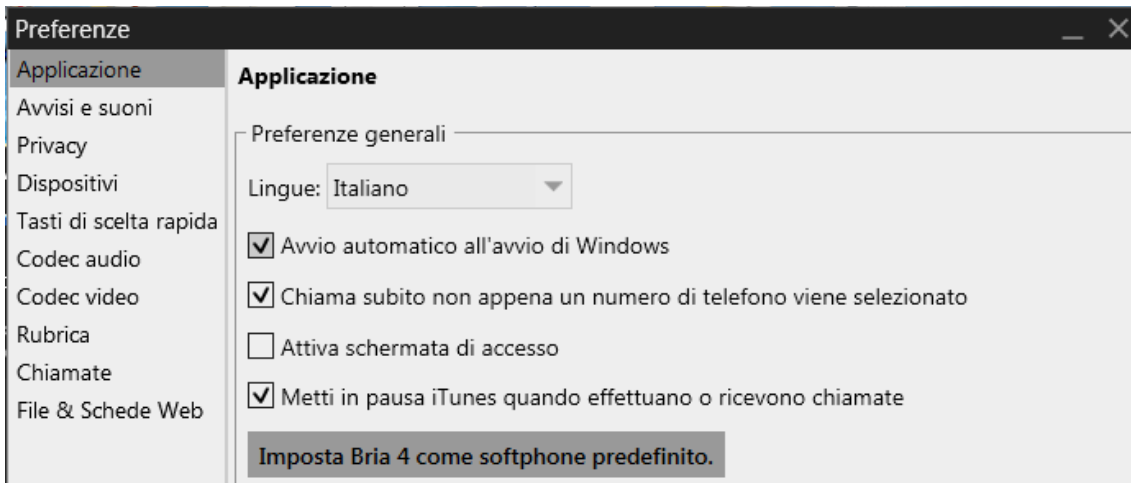
Quando al telefono, inoltra a:

OK Annulla

- Click on the Preferences sub-menu and then click the Softphone.



5. Verify that the Start automatically when Windows starts is checked under the category Application.



6. Under the category Audio Codec maintain activated only codec G.722, G.729 and G711 uLaw using the arrows power to enable / disable the codec.

